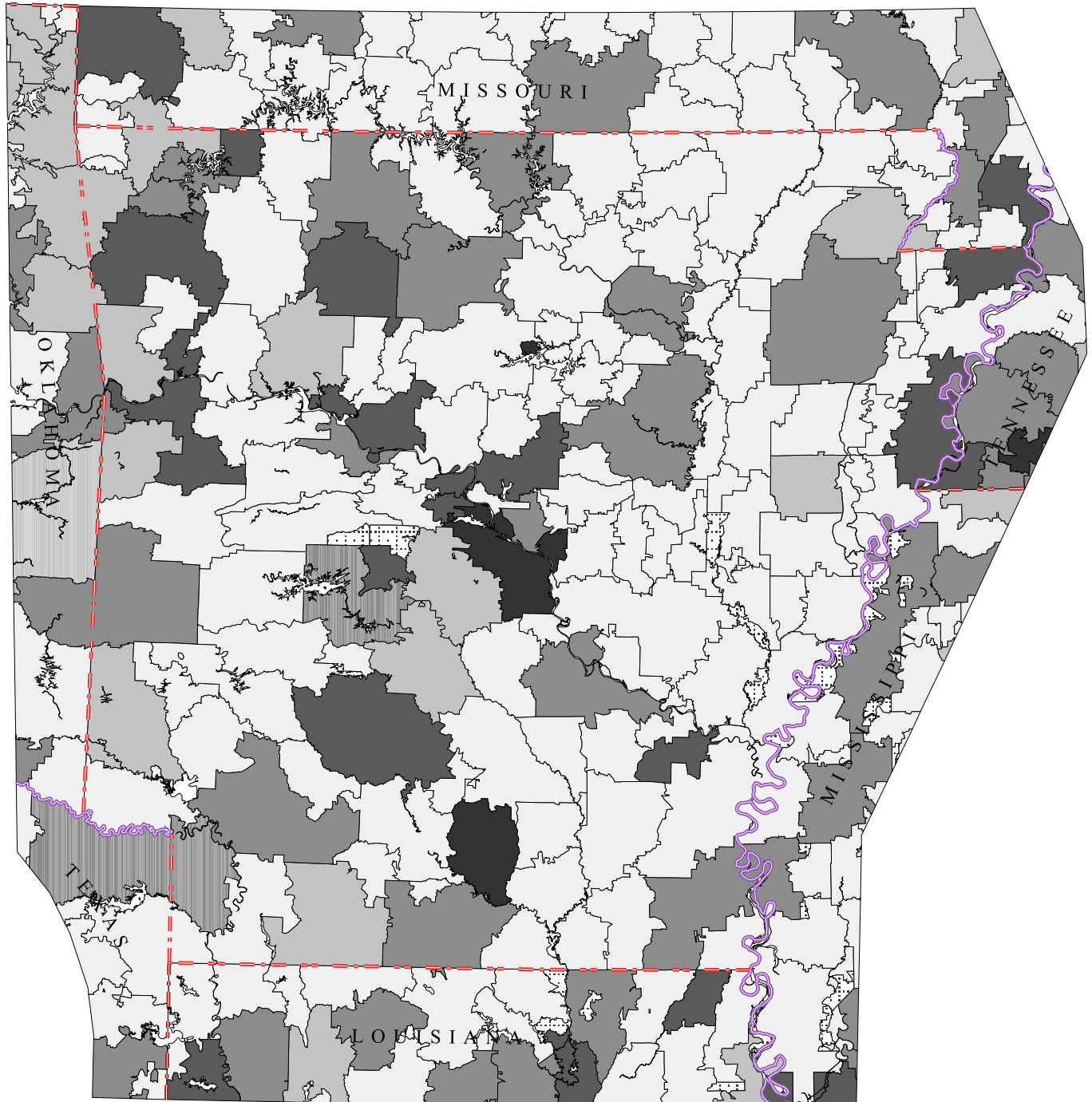


Arkansas Primary Care Service Areas

Children Under 18 Per Clinically Active Pediatrician

Data Source: U.S. Census, 2000
AMA/AOA Masterfiles, 2000



David Goodman, MD FAAP
The Primary Care Service Area Project
The Center for Evaluative Clinical Sciences
Dartmouth Medical School

fewer than 1000 (3)
 1000-2000 (12)
 2000-4000 (17)
 4000 or more (11)
 no clinically active pediatrician (101)

Rural, non-pcsa areas depicted with dots.