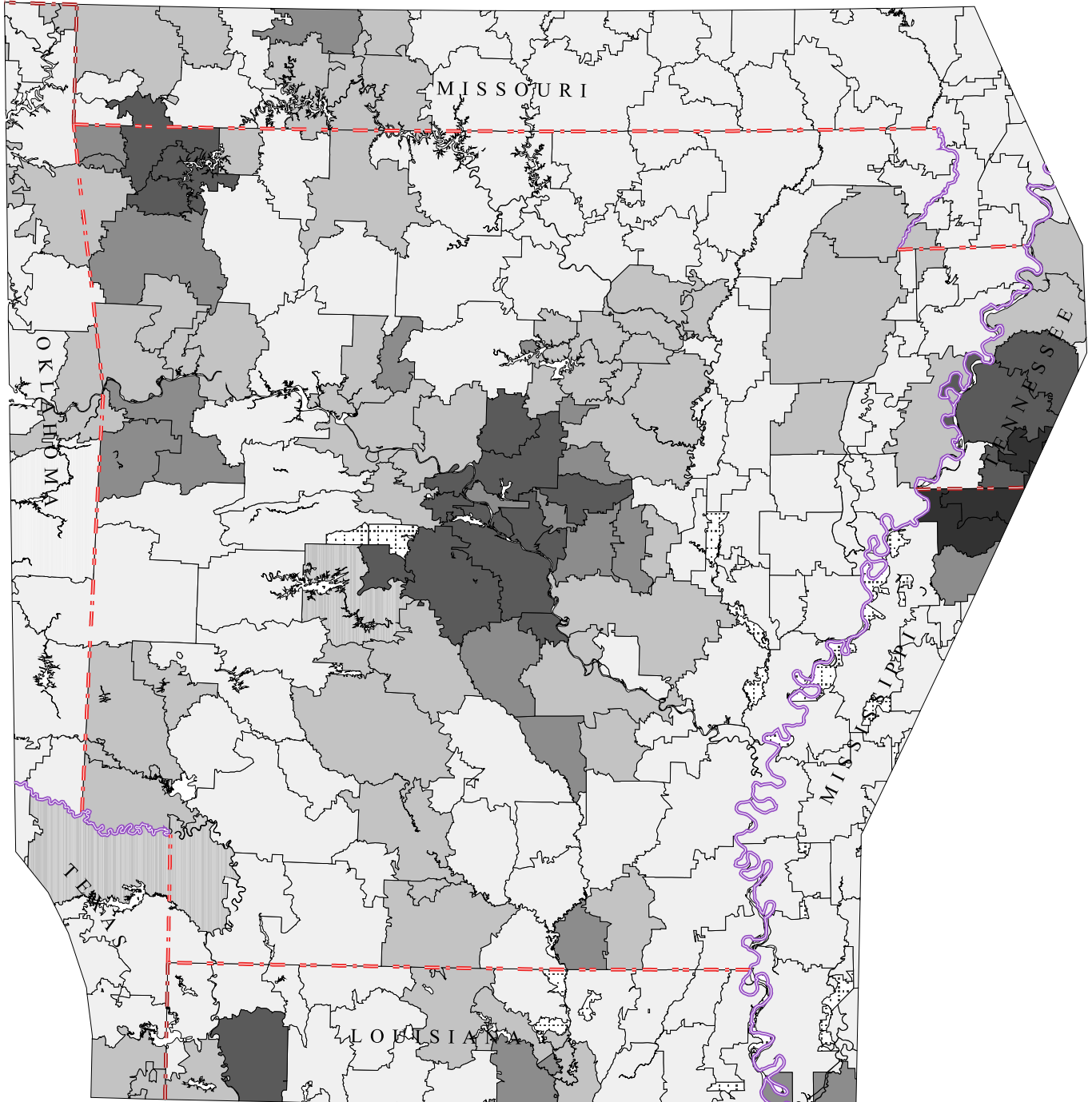


Arkansas Primary Care Service Areas

Median Household Income

Data Source: U.S. Census, 2000
AMA/AOA Masterfiles, 2000



David Goodman, MD FAAP
The Primary Care Service Area Project
The Center for Evaluative Clinical Sciences
Dartmouth Medical School

■	\$46,002 - \$146,755 (0)
■	\$37,916 - \$46,000 (11)
■	\$33,178 - \$37,910 (16)
■	\$29,186 - \$33,176 (42)
■	\$9,783 - \$29,186 (75)

Rural, non-pcsa areas depicted with dots.