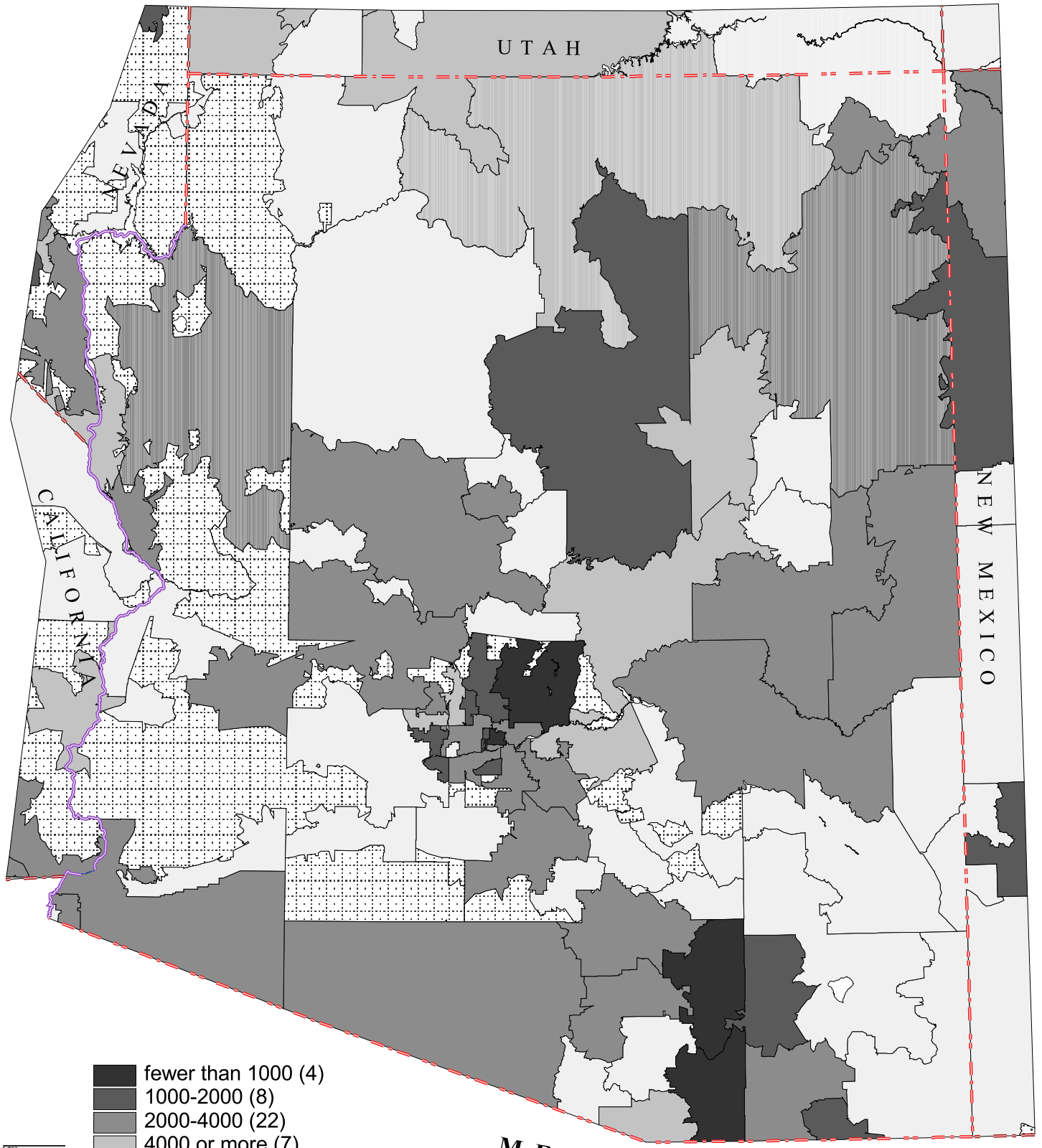


Arizona Primary Care Service Areas

Children Under 18 Per Clinically Active Pediatrician

Data Source: U.S. Census, 2000
AMA/AOA Masterfiles, 2000



- fewer than 1000 (4)
- 1000-2000 (8)
- 2000-4000 (22)
- 4000 or more (7)
- no clinically active pediatrician (27)

Rural, non-pcsa areas depicted with dots.



MEXICO

David Goodman, MD FAAP
The Primary Care Service Area Project
The Center for Evaluative Clinical Sciences
Dartmouth Medical School