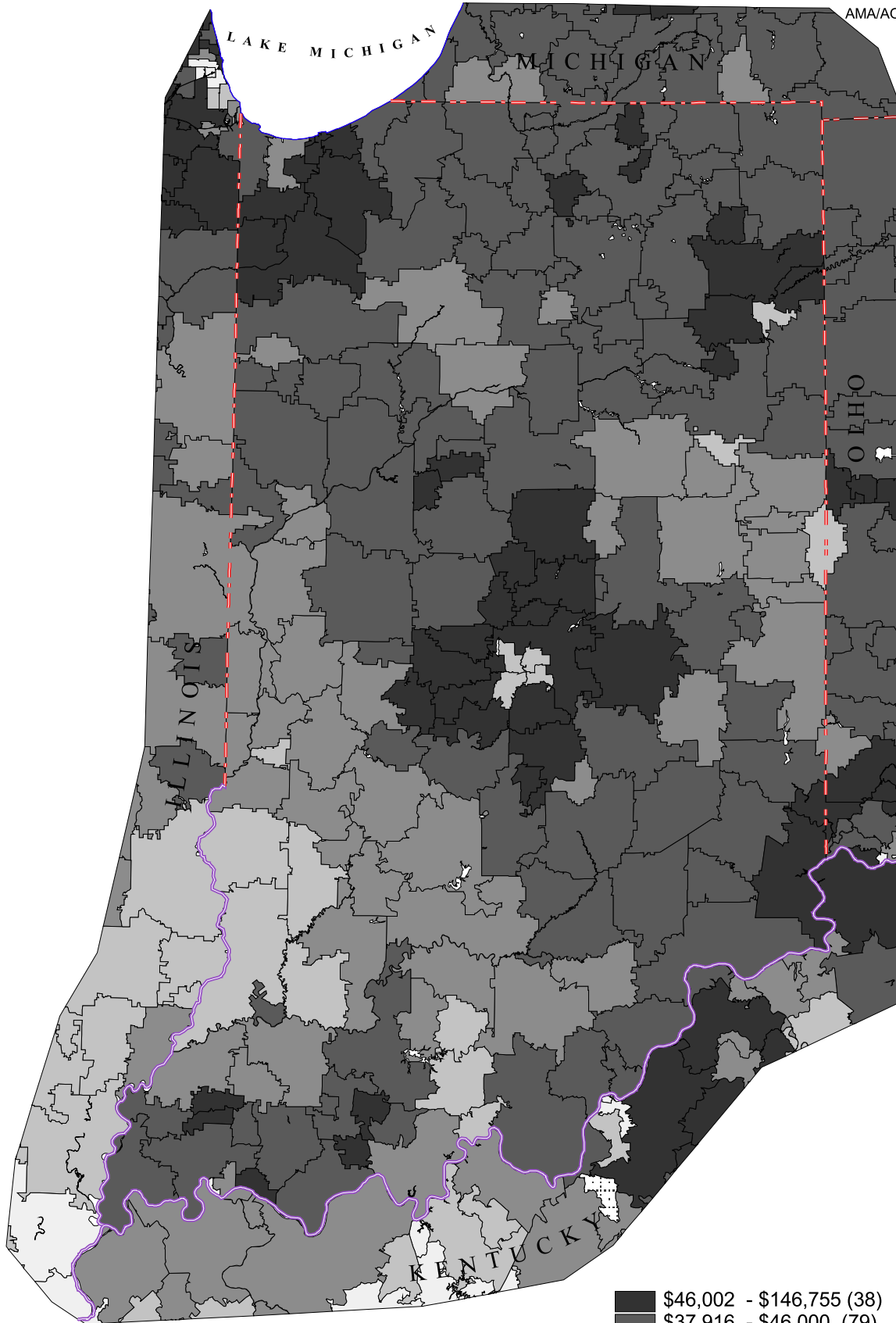


# Indiana Primary Care Service Areas

## Median Household Income

Data Source: U.S. Census, 2000  
AMA/AOA Masterfiles, 2000



Dark Gray	\$46,002 - \$146,755 (38)
Medium-Dark Gray	\$37,916 - \$46,000 (79)
Medium Gray	\$33,178 - \$37,910 (38)
Light Gray	\$29,186 - \$33,176 (13)
Very Light Gray	\$9,783 - \$29,186 (1)

Rural, non-pcsa areas depicted with dots.



David Goodman, MD FAAP  
The Primary Care Service Area Project  
The Center for Evaluative Clinical Sciences  
Dartmouth Medical School