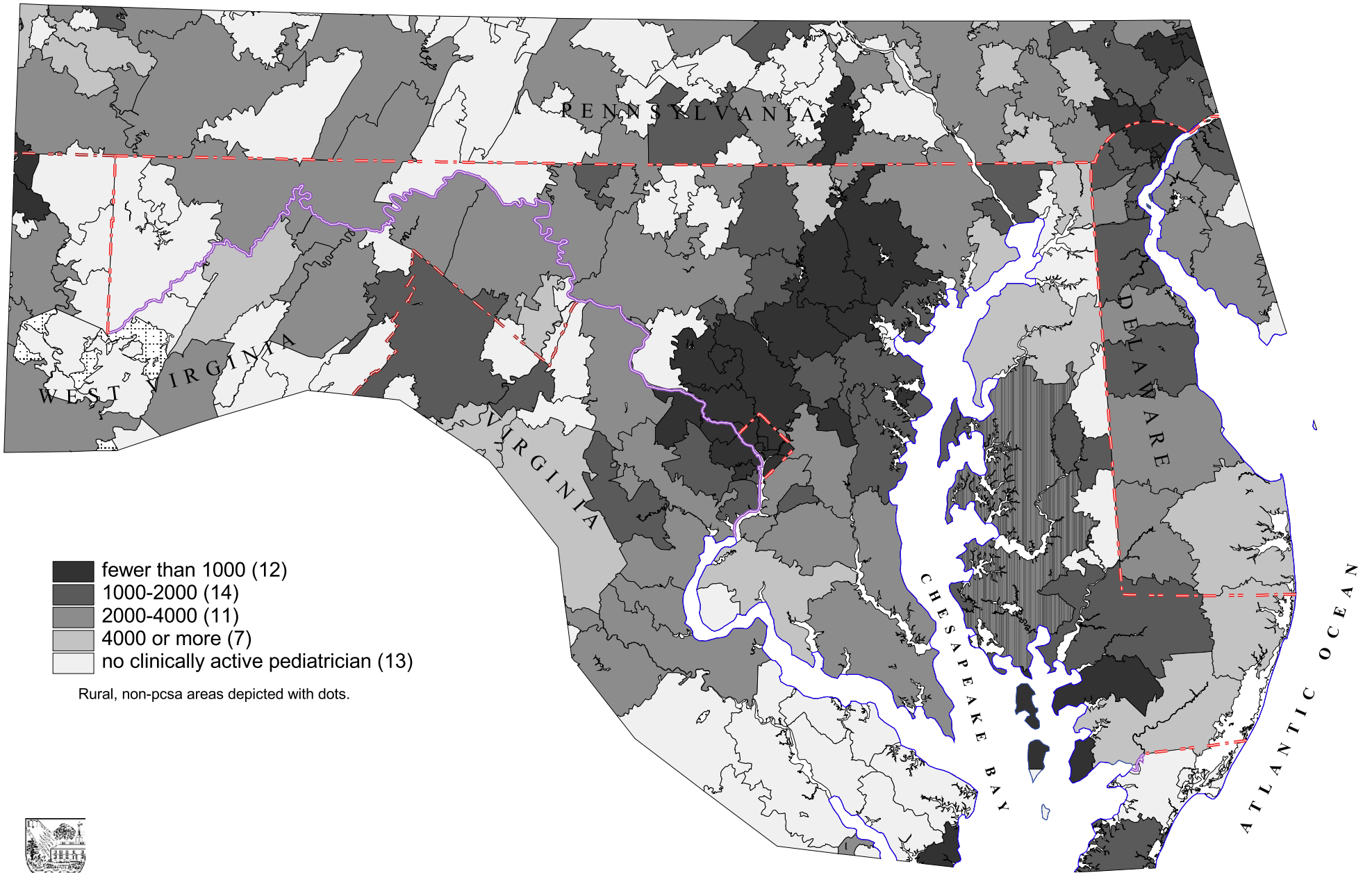


# Maryland Primary Care Service Areas

## Children Under 18 Per Clinically Active Pediatrician

Data Source: U.S. Census, 2000  
AMA/AOA Masterfiles, 2000



David Goodman, MD FAAP  
The Primary Care Service Area Project  
The Center for Evaluative Clinical Sciences  
Dartmouth Medical School