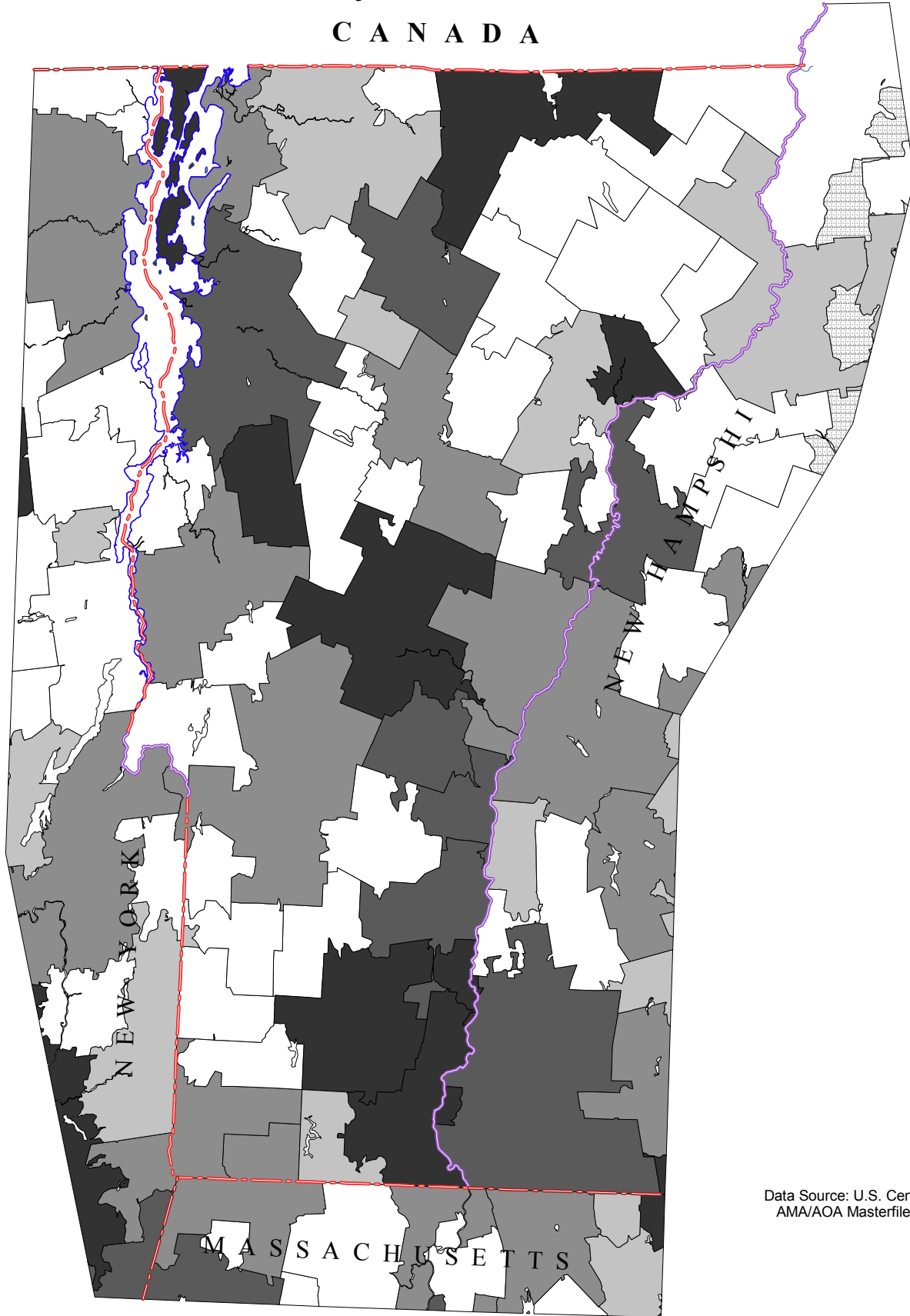


Vermont Primary Care Service Areas

Percent of Clinically Active Pediatricians Who Are Female



Data Source: U.S. Census, 2000;
AMA/AOA Masterfiles, 2000.



David Goodman, MD FAAP
The Primary Care Service Area Project
The Center for Evaluative Clinical Sciences
Dartmouth Medical School

- 60% - 100% (8)
- 45% - 60% (5)
- 1% - 45% (5)
- no female clinically active general or subspecialty pediatrician (4)
- no clinically active general or subspecialty pediatrician (22)

Rural, non-pcsa areas depicted with dots.