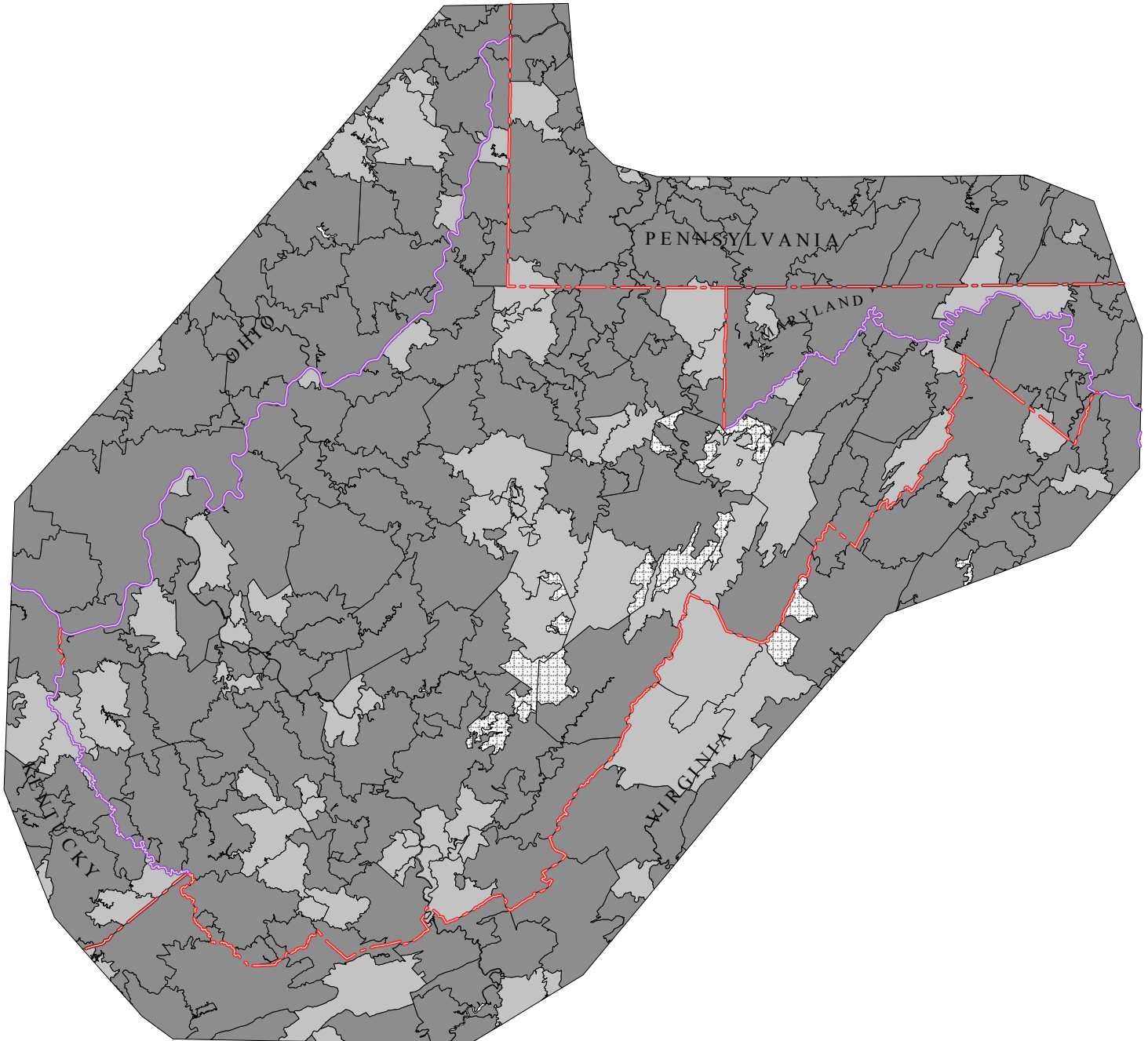


West Virginia Primary Care Service Areas

Percent of Children 5-17 Years Old in Linguistically Isolated Households



- > 10% to 33% (0)
- > 5% to 10% (0)
- > 0% to 5% (75)
- 0% (39)

Rural, non-pcsa areas depicted with dots.

Linguistic Isolation: A household in which all members 14 years old and over speak a non-English language and also speak English less than "very well" (have difficulty with English).

-- U.S. Census Bureau

Data Source: U.S. Census, 2000.



David Goodman, MD FAAP
The Primary Care Service Area Project
The Center for Evaluative Clinical Sciences
Dartmouth Medical School