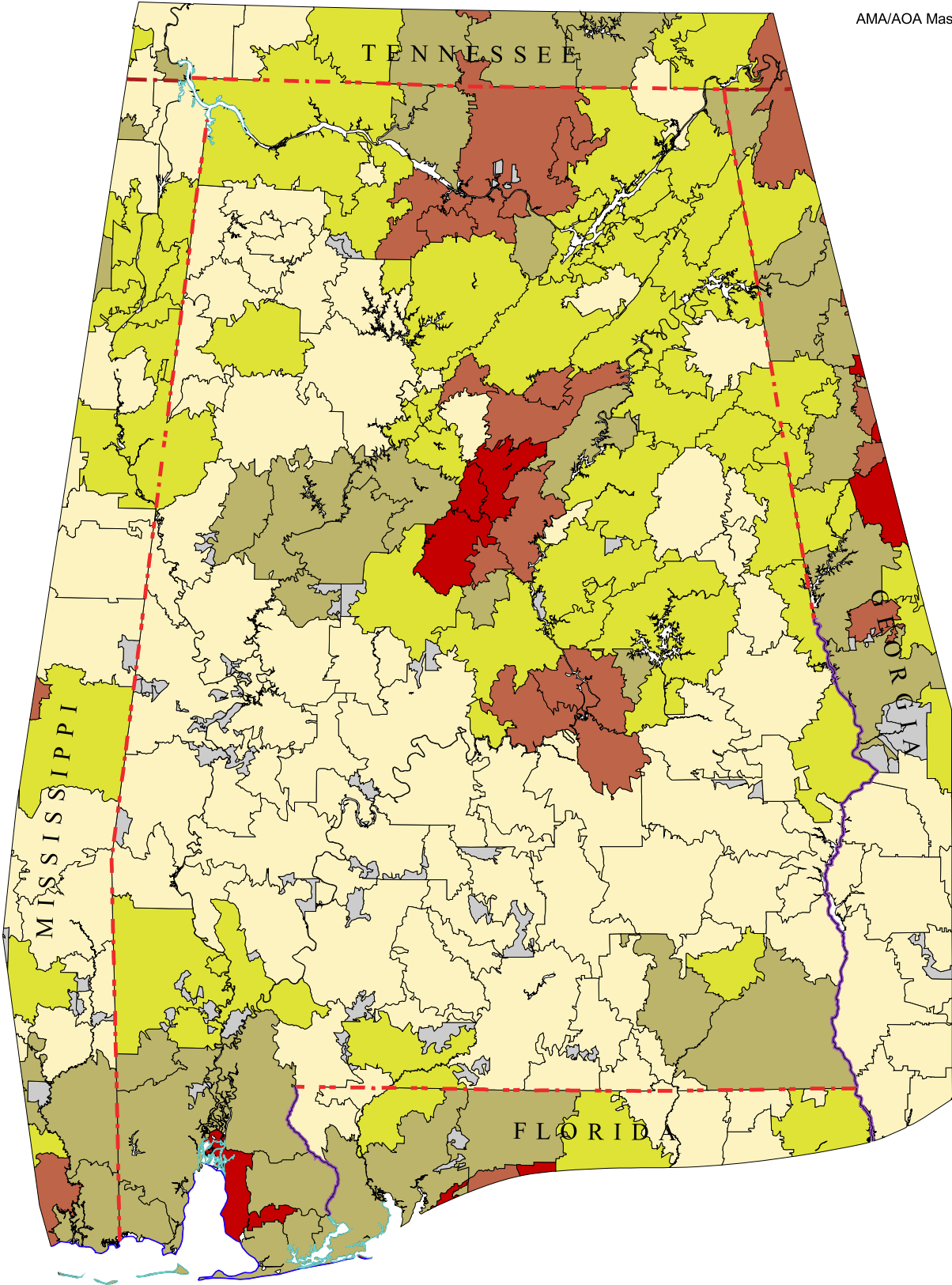


# Alabama Primary Care Service Areas

## Median Household Income

Data Source: U.S. Census, 2000  
AMA/AOA Masterfiles, 2000



<span style="display:inline-block; width:15px; height:15px; background-color:darkred;"></span>	\$46,002 - \$146,755 (4)
<span style="display:inline-block; width:15px; height:15px; background-color:firebrick;"></span>	\$37,916 - \$46,000 (13)
<span style="display:inline-block; width:15px; height:15px; background-color:lightcoral;"></span>	\$33,178 - \$37,910 (21)
<span style="display:inline-block; width:15px; height:15px; background-color:yellow;"></span>	\$29,186 - \$33,176 (40)
<span style="display:inline-block; width:15px; height:15px; background-color:lightyellow;"></span>	\$9,783 - \$29,186 (65)

Non-pcsa, rural lands are shown in gray.



David Goodman, MD FAAP  
The Primary Care Service Area Project  
The Center for Evaluative Clinical Sciences  
Dartmouth Medical School