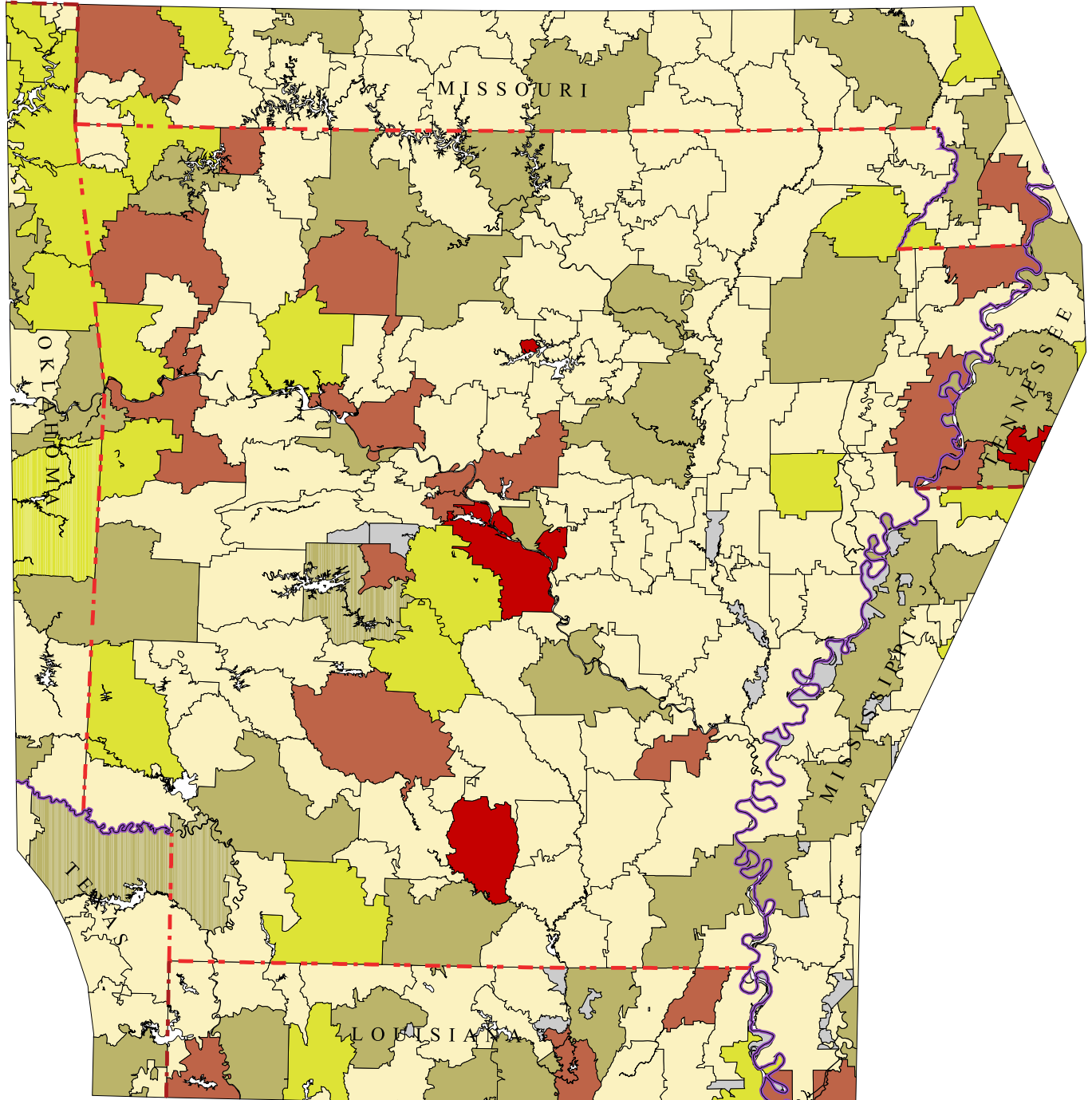


Arkansas Primary Care Service Areas

Children Under 18 Per Clinically Active Pediatrician

Data Source: U.S. Census, 2000
AMA/AOA Masterfiles, 2000



David Goodman, MD FAAP
The Primary Care Service Area Project
The Center for Evaluative Clinical Sciences
Dartmouth Medical School

