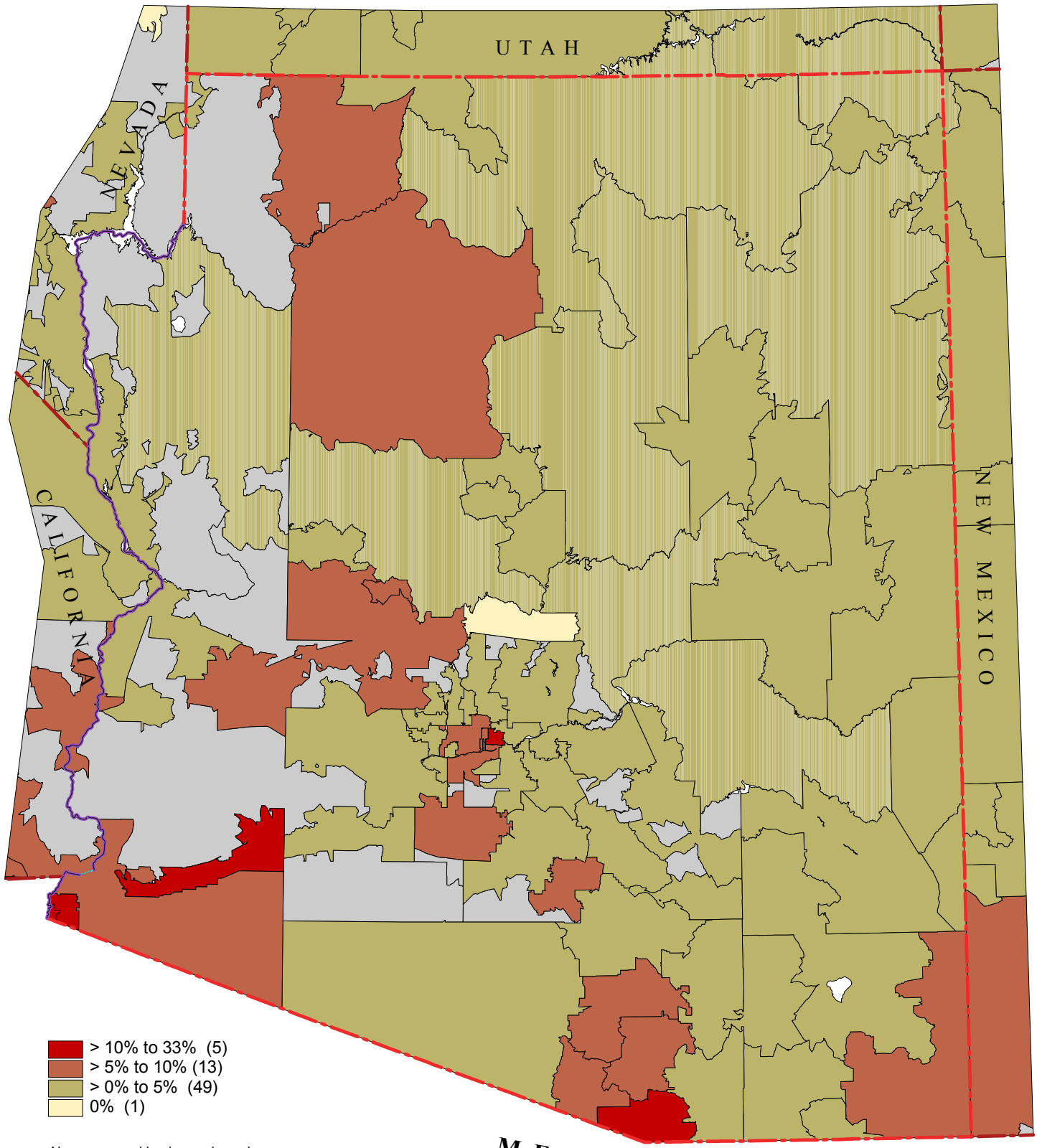


Arizona Primary Care Service Areas

Percent of Children 5-17 Years Old in Linguistically Isolated Households



- > 10% to 33% (5)
- > 5% to 10% (13)
- > 0% to 5% (49)
- 0% (1)

Non-pcsa, rural lands are shown in gray.

MEXICO

Linguistic Isolation: A household in which all members 14 years old and over speak a non-English language and also speak English less than "very well" (have difficulty with English).
 -- U.S. Census Bureau

Data Source: U.S. Census, 2000.



David Goodman, MD FAAP
 The Primary Care Service Area Project
 The Center for Evaluative Clinical Sciences
 Dartmouth Medical School