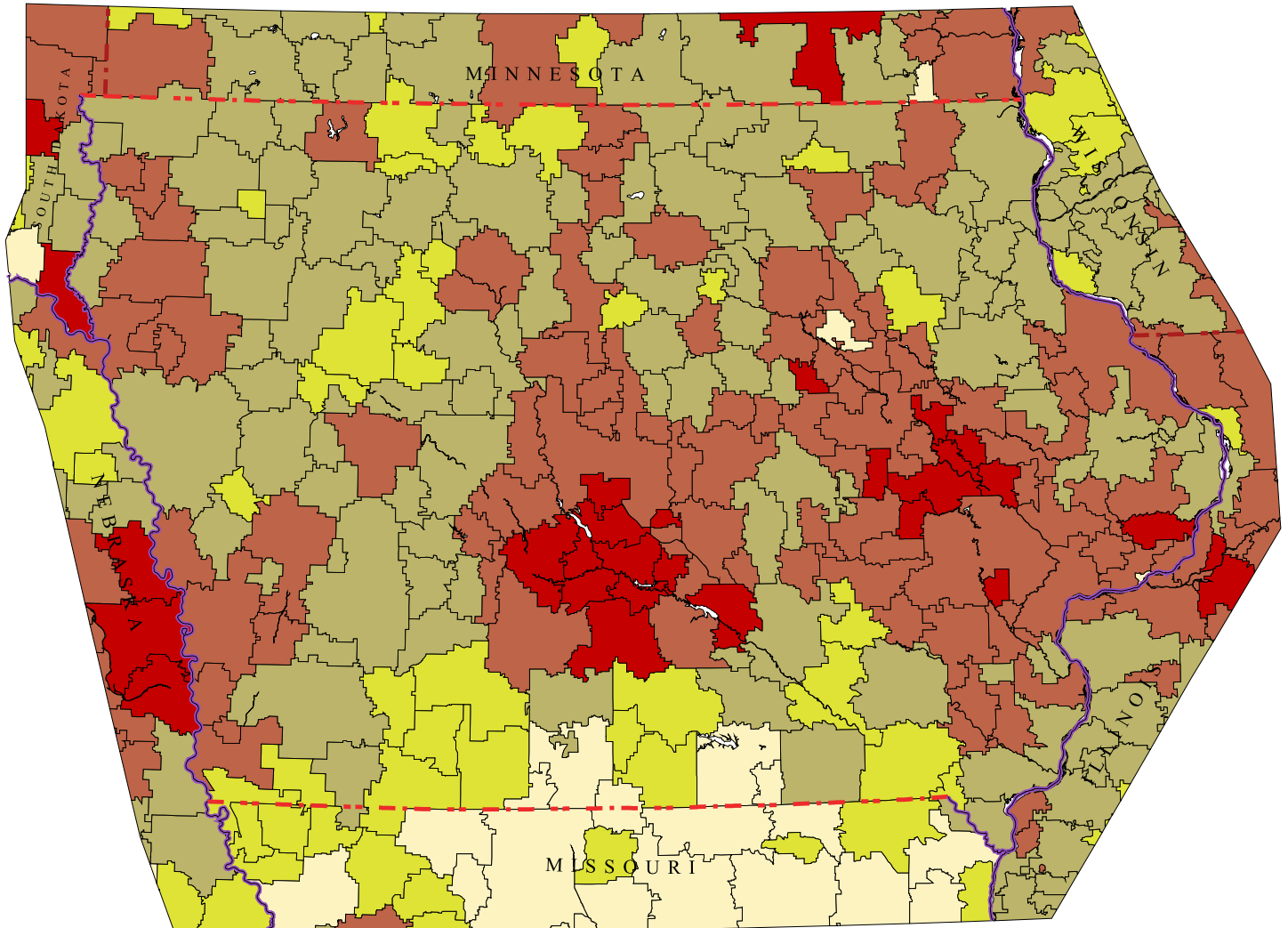


# Iowa Primary Care Service Areas

## Median Household Income

Data Source: U.S. Census, 2000  
AMA/AOA Masterfiles, 2000



Red	\$46,002 - \$146,755 (17)
Dark Red	\$37,916 - \$46,000 (80)
Light Green	\$33,178 - \$37,910 (88)
Yellow	\$29,186 - \$33,176 (29)
Light Yellow	\$9,783 - \$29,186 (7)



David Goodman, MD FAAP  
The Primary Care Service Area Project  
The Center for Evaluative Clinical Sciences  
Dartmouth Medical School