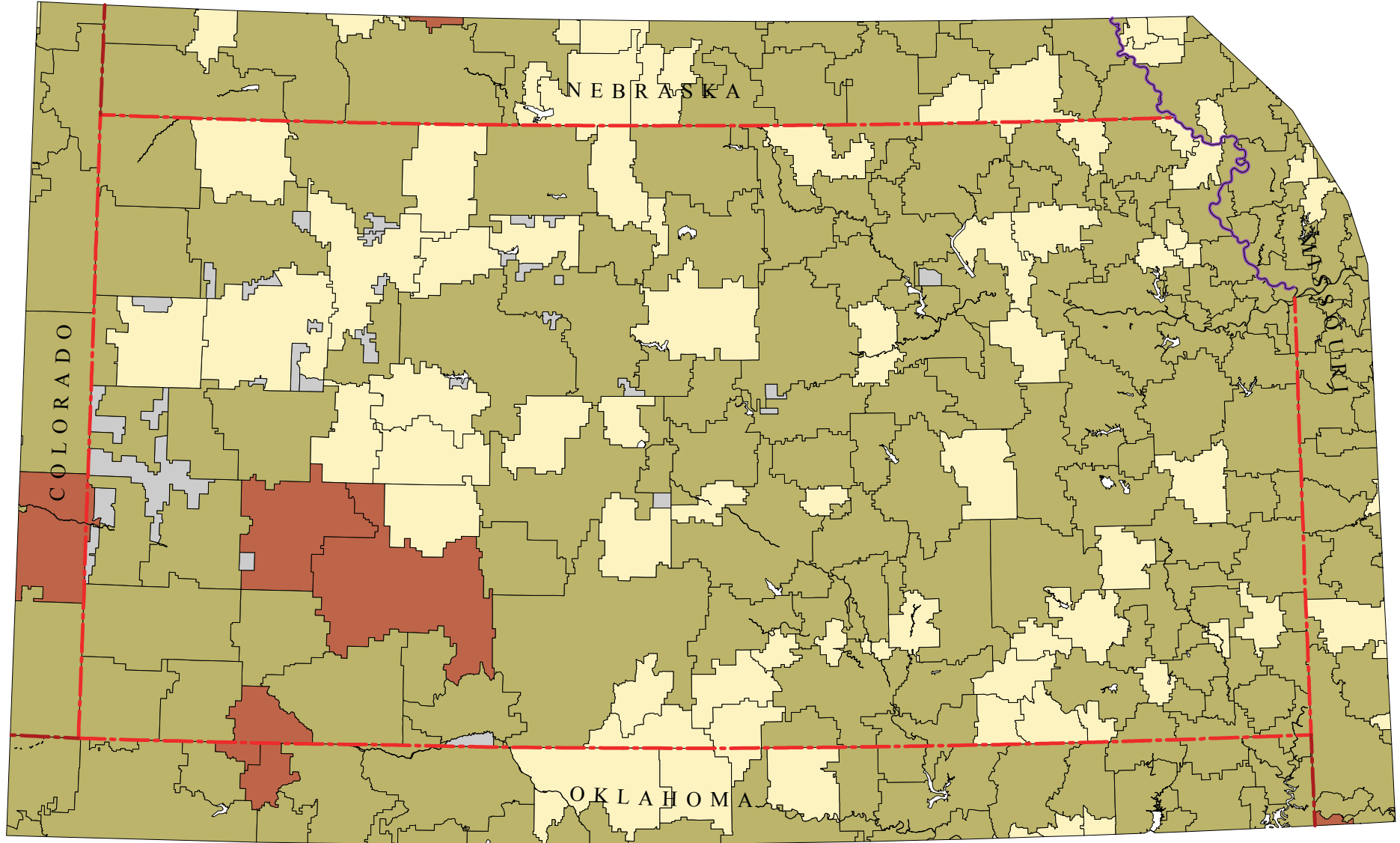


# Kansas Primary Care Service Areas

## Percent of Children 5-17 Years Old in Linguistically Isolated Households



- > 10% to 33% (0)
- > 5% to 10% (3)
- > 0% to 5% (103)
- 0% (50)

Linguistic Isolation: A household in which all members 14 years old and over speak a non-English language and also speak English less than "very well" (have difficulty with English).  
 -- U.S. Census Bureau



David Goodman, MD FAAP  
 The Primary Care Service Area Project  
 The Center for Evaluative Clinical Sciences  
 Dartmouth Medical School

Non-pcsa, rural lands are shown in gray.

Data Source: U.S. Census, 2000.