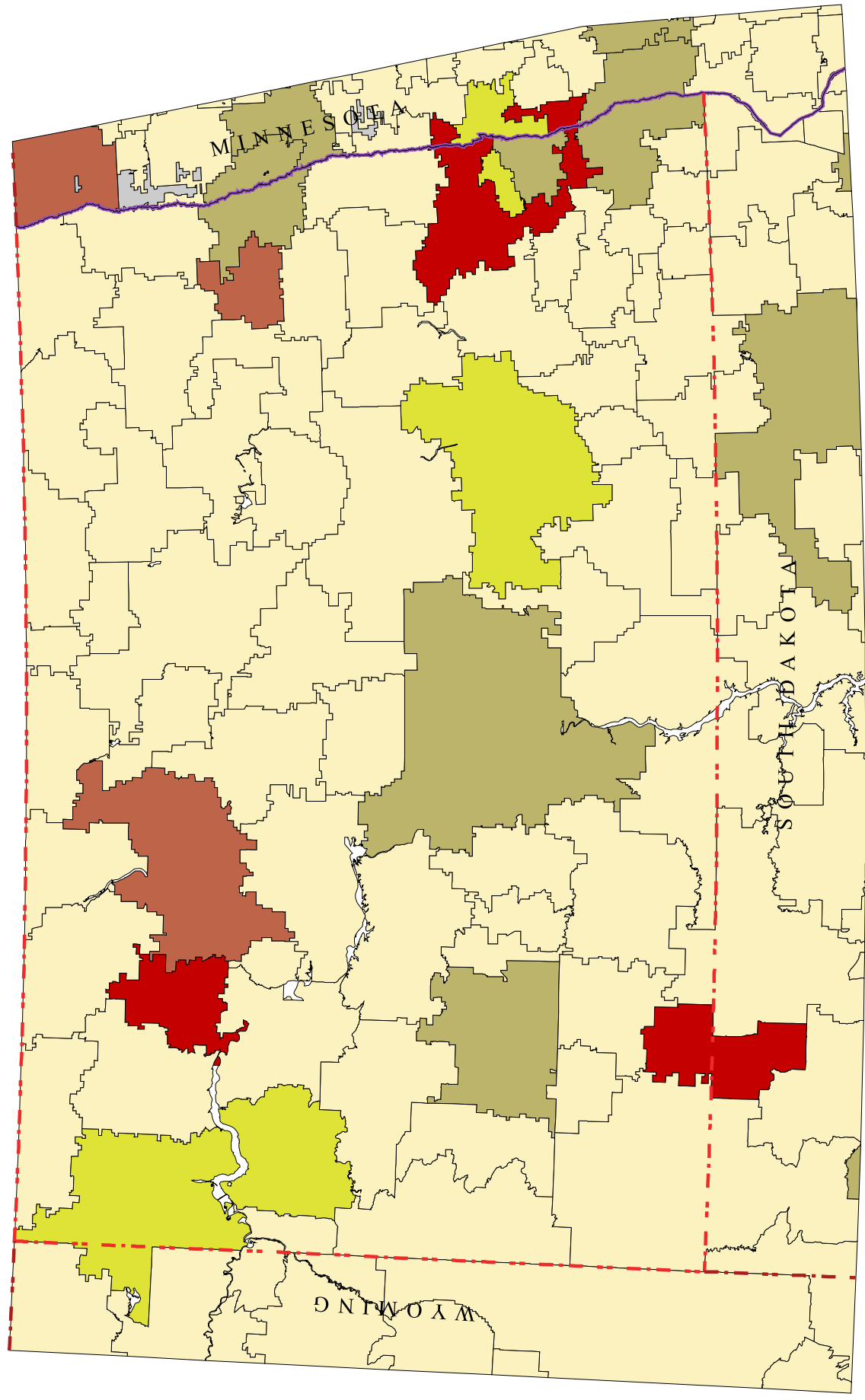


North Dakota Primary Care Service Areas

Children Under 18 Per Clinically Active Pediatrician

Data Source: U.S. Census, 2000
AMA/AOA Masterfiles, 2000



- fewer than 1000 (3)
- 1000-2000 (2)
- 2000-4000 (5)
- 4000 or more (3)
- no clinically active pediatrician (56)

Non-pcspa, rural lands are shown in gray.



David Goodman, MD FAAP
The Primary Care Service Area Project
The Center for Evaluative Clinical Sciences
Dartmouth Medical School