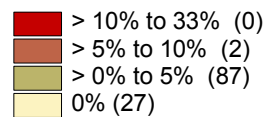
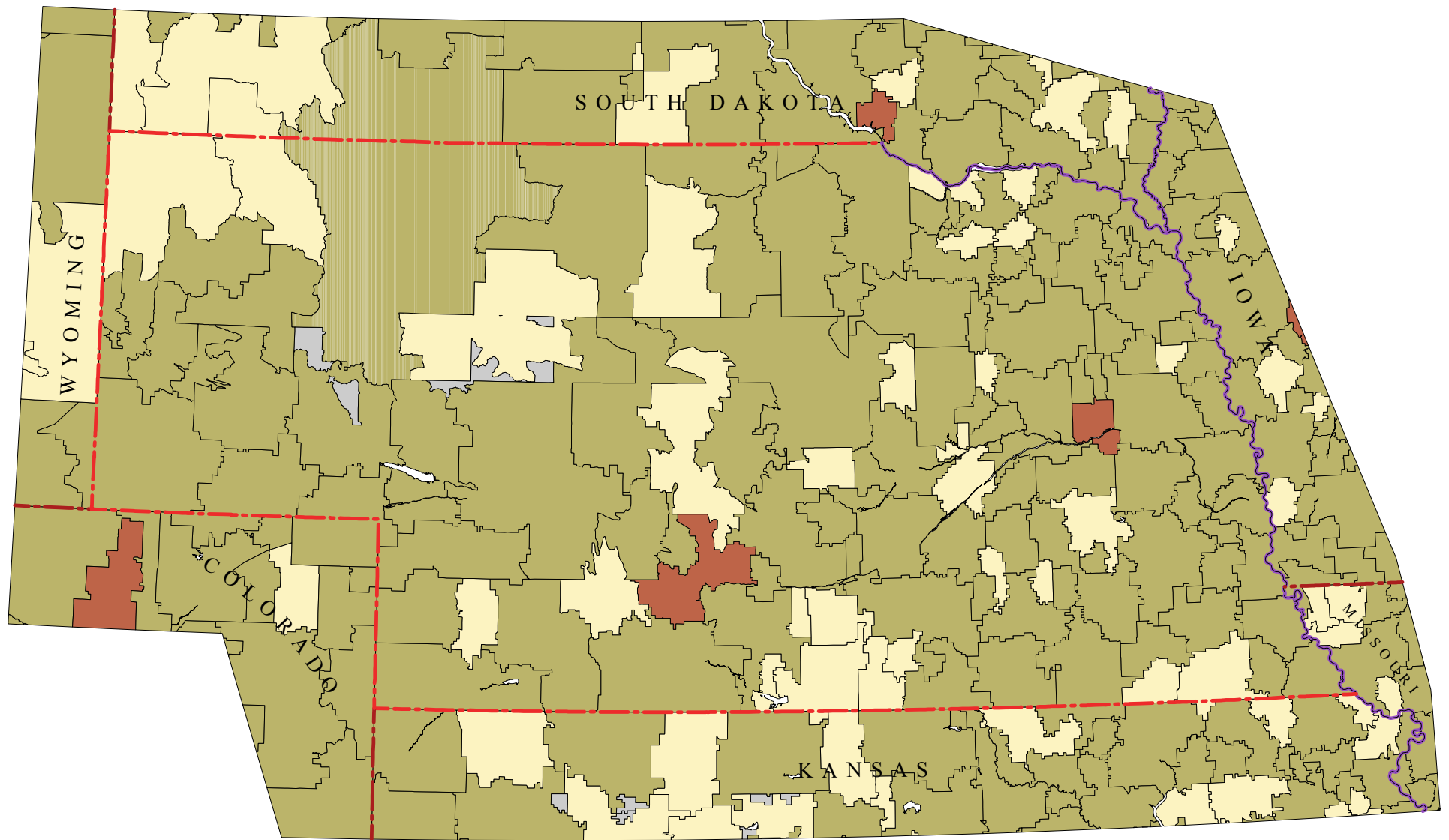


Nebraska Primary Care Service Areas

Percent of Children 5-17 Years Old in Linguistically Isolated Households



Linguistic Isolation: A household in which all members 14 years old and over speak a non-English language and also speak English less than "very well" (have difficulty with English).
 -- U.S. Census Bureau



David Goodman, MD FAAP
 The Primary Care Service Area Project
 The Center for Evaluative Clinical Sciences
 Dartmouth Medical School

Non-pcsa, rural lands are shown in gray.

Data Source: U.S. Census, 2000.