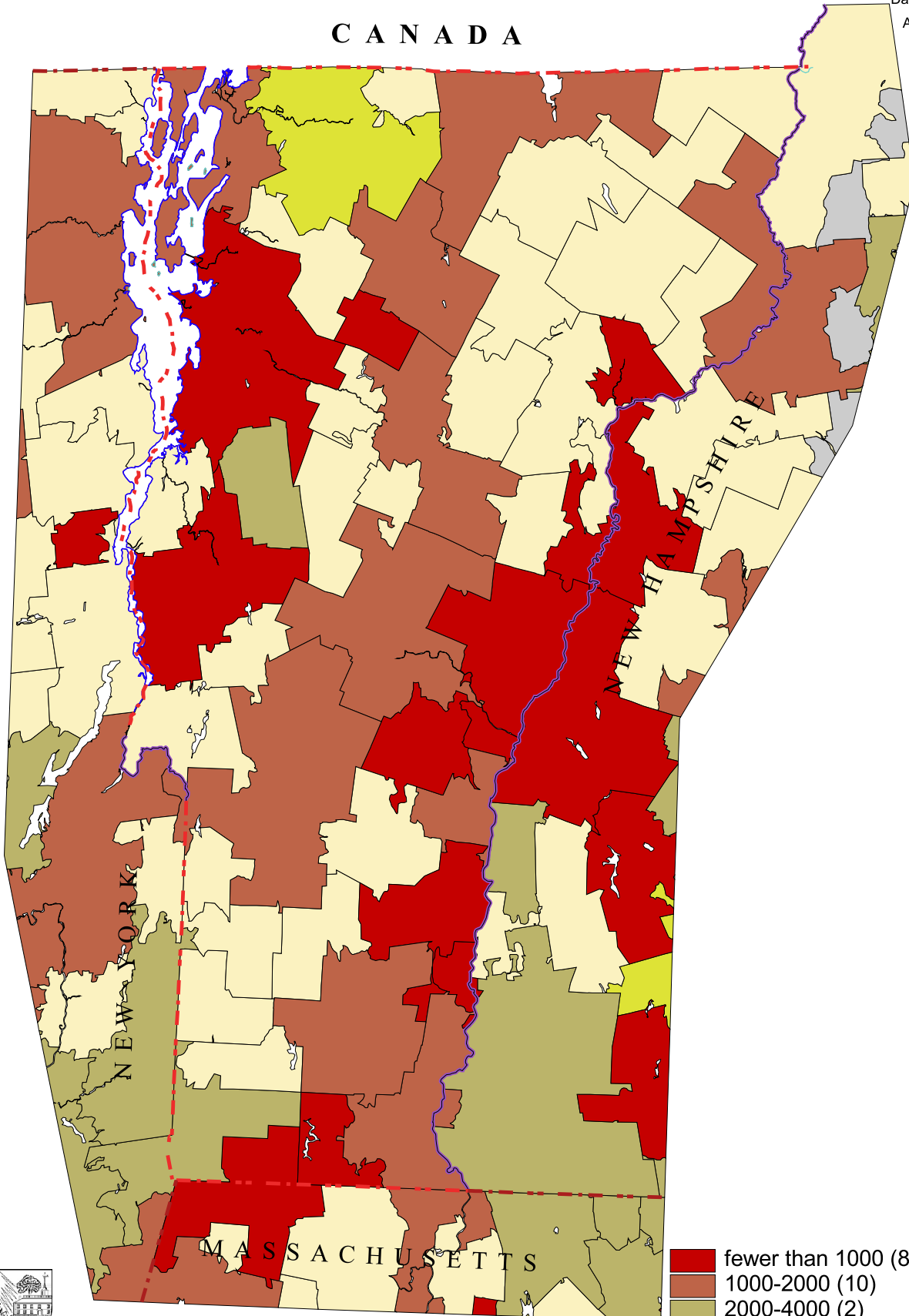


Vermont Primary Care Service Areas

Children Under 18 Per Clinically Active Pediatrician

Data Source: U.S. Census, 2000
AMA/AOA Masterfiles, 2000

C A N A D A



- fewer than 1000 (8)
 - 1000-2000 (10)
 - 2000-4000 (2)
 - 4000 or more (1)
 - no clinically active pediatrician (23)
- Non-pcsa, rural lands are shown in gray.



David Goodman, MD FAAP
The Primary Care Service Area Project
The Center for Evaluative Clinical Sciences
Dartmouth Medical School