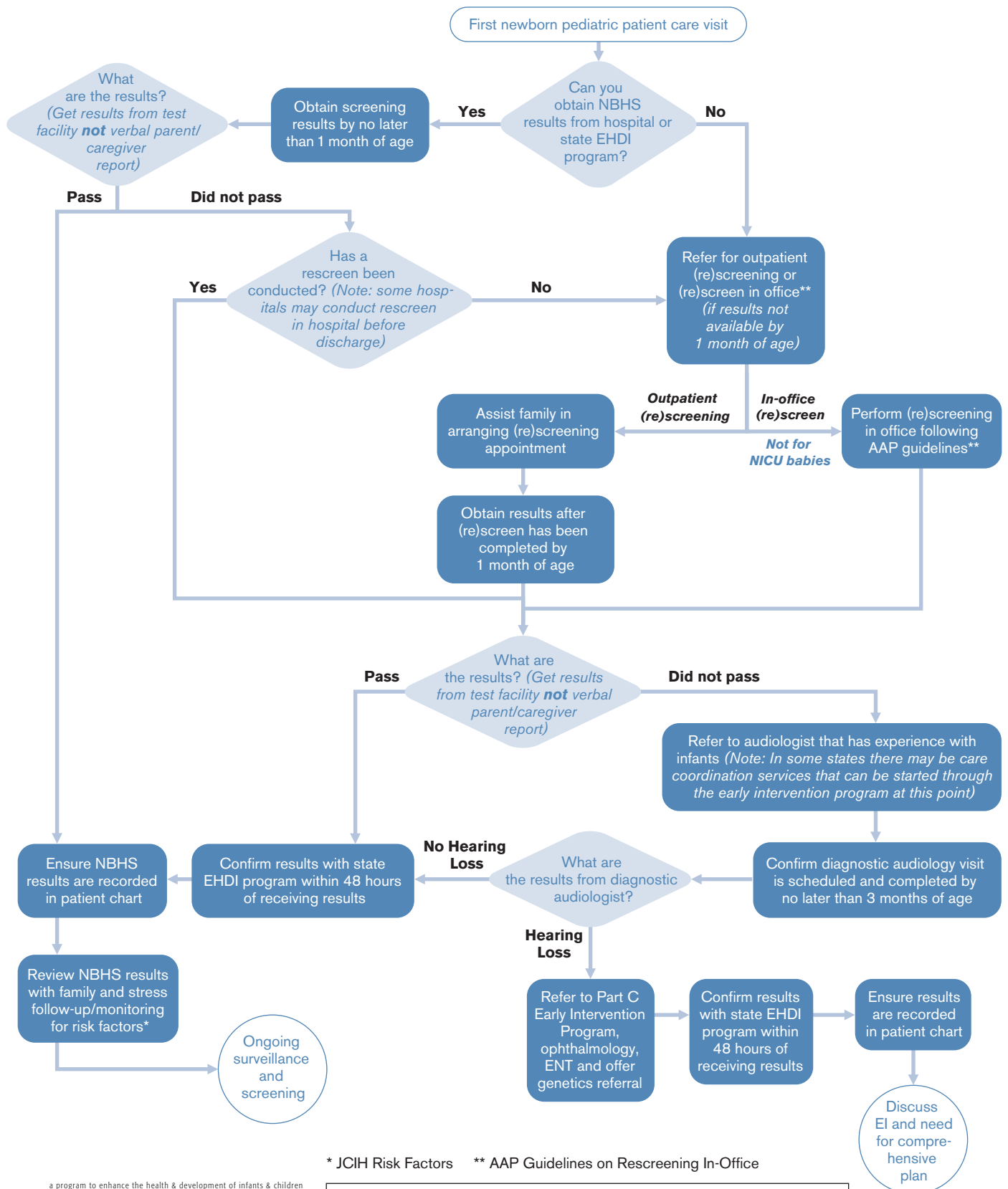


REDUCING LOSS TO FOLLOW-UP/DOCUMENTATION IN NEWBORN HEARING SCREENING: GUIDELINES FOR MEDICAL HOME PROVIDERS



* JCIH Risk Factors ** AAP Guidelines on Rescreening In-Office



a program to enhance the health & development of infants & children
Early Hearing Detection & Intervention Program
 A program of the American Academy of Pediatrics in cooperation with the Centers for Disease Control & Prevention and Maternal & Child Health Bureau/HRSA

Funding for the development of these materials was provided through a cooperative agreement (U43MC09134) between the American Academy of Pediatrics and the US Department of Health and Human Services, Health Resources and Services Administration, Maternal and Child Health Bureau as well as through a cooperative agreement (5U58DD00587) between the American Academy of Pediatrics and the National Center on Birth Defects and Developmental Disabilities of the Centers for Disease Control and Prevention (CDC). Content is solely the responsibility of the authors and does not necessarily represent the official views of the Maternal and Child Health Bureau or the Centers for Disease Control and Prevention.